

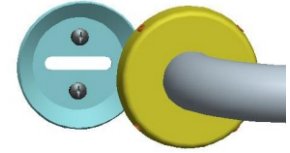
**Configuration 12****Set Screw Concealed Flange**

(See technical page for detail)

**SPECIFICATION: (Stainless Steel)**

120° Angle Bar 12" x 12" (305 mm x 305 mm) with Set-Screw concealed flanges. Manufactured by ELCOMA from 18 gauge, Type 304, satin finished, stainless steel tubing. Two, 12 gauge stainless steel mounting flange with 4 set screws shall be Heliarc welded to the tube to form a single structural unit. Angle Bar shall comply with all applicable federal and local building and safety codes.

1.25" (32 mm) bar dia.	Model # 12-22*SC	(* insert standard size 1212)
1.50" (38 mm) bar dia.	Model # 12-52*SC	(substitute S for smooth with K for Knurled grip, P for Peened grip, or G for SHUR-GRIP)

**Set-Screw "C"  
Concealed Flange****SPECIFICATION: (Painted Stainless Steel)**

120° Angle Bar 12" x 12" (305 mm x 305 mm) with Set-Screw concealed flanges. Manufactured by ELCOMA from 18 gauge, Type 304, stainless steel tubing. Two, 12 gauge stainless steel mounting flanges shall be Heliarc welded to the tube to form a single structural unit. Angle Bar shall have a polyester powder coating finish. It shall comply with all applicable federal and local building and safety codes.

1.25" (32 mm) bar dia.	White	Model # 12-26*SC01	(* insert standard size 1212)
1.25" (32 mm) bar dia.	Almond	Model # 12-26*SC02	(substitute S for smooth with G for SHUR-GRIP)
1.50" (38 mm) bar dia.	White	Model # 12-56*SC01	
1.50" (38 mm) bar dia.	Almond	Model # 12-56*SC02	

**SPECIFICATION: (Chrome Plated Steel)**

120° Angle Bar 12" x 12" (305 mm x 305 mm) with Set-Screw concealed flanges. Manufactured by ELCOMA from 18 gauge steel tubing. Two, 12 gauge steel mounting flanges shall be brazed to the tube to form a single structural unit prior to triple plating. Angle Bar shall comply with all applicable federal, provincial and local building and safety codes.

1.25" (32 mm) bar dia.	Model # 12-21*SC	(* insert standard size 1212)
1.50" (38 mm) bar dia.	Model # 12-51*SC	(substitute S for smooth with K for Knurled grip)

**Configuration 13****SPECIFICATION: (Stainless Steel with centre post)**

120° Angle Bar 16" x 16" (406 mm x 406 mm) or 24" x 24" (610 mm x 610 mm) with center post and Set Screw concealed flanges. Manufactured by ELCOMA from 18 gauge, Type 304, satin finished, stainless steel tubing. Three, 12 gauge stainless steel mounting flanges shall be Heliarc welded to the tube to form a single structural unit. Angle Bar shall comply with all applicable federal and local building and safety codes.

1.25" (32 mm) bar dia.	Model # 13-22*ST	(* insert standard size 1616 or 2424)
1.50" (38 mm) bar dia.	Model # 13-52*ST	(substitute S for smooth with K for Knurled grip, P for Peened grip, or G for SHUR-GRIP)

**SPECIFICATION: (Painted Stainless Steel with centre post)**

120° Angle Bar 16" x 16" (406 mm x 406 mm) or 24" x 24" (610 mm x 610 mm) with center post and Set-Screw concealed flanges. Manufactured by ELCOMA from 18 gauge, Type 304, stainless steel tubing. Three, 12 gauge stainless steel mounting flanges shall be Heliarc welded to the tube to form a single structural unit. Angle Bar shall have a polyester powder coating finish. It shall comply with all applicable federal and local building and safety codes.

(\* insert standard size 1616 or 2424)

1.25" (32 mm) bar dia.	White	Model # 13-22*SC01	(substitute S for smooth with G for SHUR-GRIP)
1.25" (32 mm) bar dia.	Almond	Model # 13-22*SC02	
1.50" (38 mm) bar dia.	White	Model # 13-52*SC01	
1.50" (38 mm) bar dia.	Almond	Model # 13-52*SC02	

**SPECIFICATION: (Chrome Plated Steel with centre post)**

120° Angle Bar 16" x 16" (406 mm x 406 mm) or 24" x 24" (610 mm x 610 mm) with center post and Set-Screw concealed flanges. Manufactured by ELCOMA from 18 gauge steel tubing. Three, 12 gauge steel mounting flanges shall be brazed to the tube to form a single structural unit prior to triple plating. Angle Bar shall comply with all applicable federal and local building and safety codes.

(\* insert standard size 1616 or 2424)

1.25" (32 mm) bar dia.	Model # 13-21*SC	(substitute S for smooth with K for Knurled GRIP)
1.50" (38 mm) bar dia.	Model # 13-51*SC	

For painted bars there are more than 25 designer colors available on special request.

